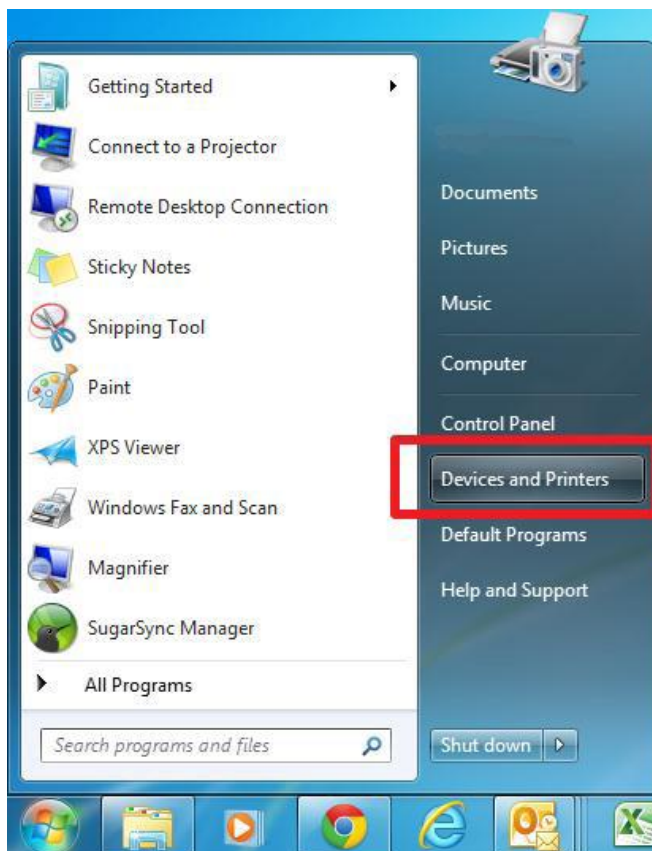


Instructions to install Win 7, Vista and Server 2008/2012 IntelliBar printer driver For Model 48 and 412 Network printers V:2.0

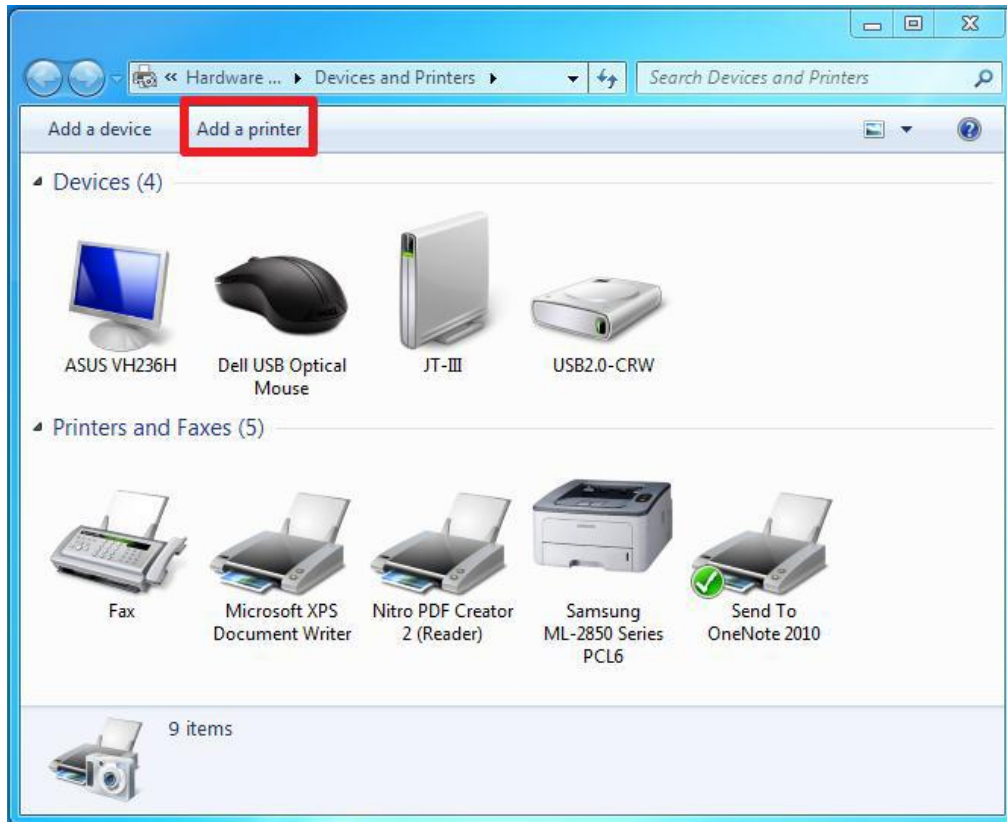
1. [Download](#)/copy the zipped IntelliBar Driver Package to the desired location on your computer.
2. Unzip the driver package. **Note the location of the OEMPRINT.INF file.**
3. Physically install your IntelliBar printer on your computer network. The printer should have ribbon and labels installed and be powered on.
4. **Obtain the printers IP address** Print a test page of the network settings by pushing the print server test/reset button on the rear of the printer. The button is located behind the pinhole opening below the three print server status LEDs. Use a straightened paper clip to push and immediately release the test/reset button one time. Once the button is actuated, a test page will print with the configuration details of the print server, including its IP, subnet mask and gateway addresses. **Note the IP address.**
5. Click on the Window Start icon at the lower left hand corner of the desktop. **Note:** Some dialog boxes may appear different depending on which operating system you are using.



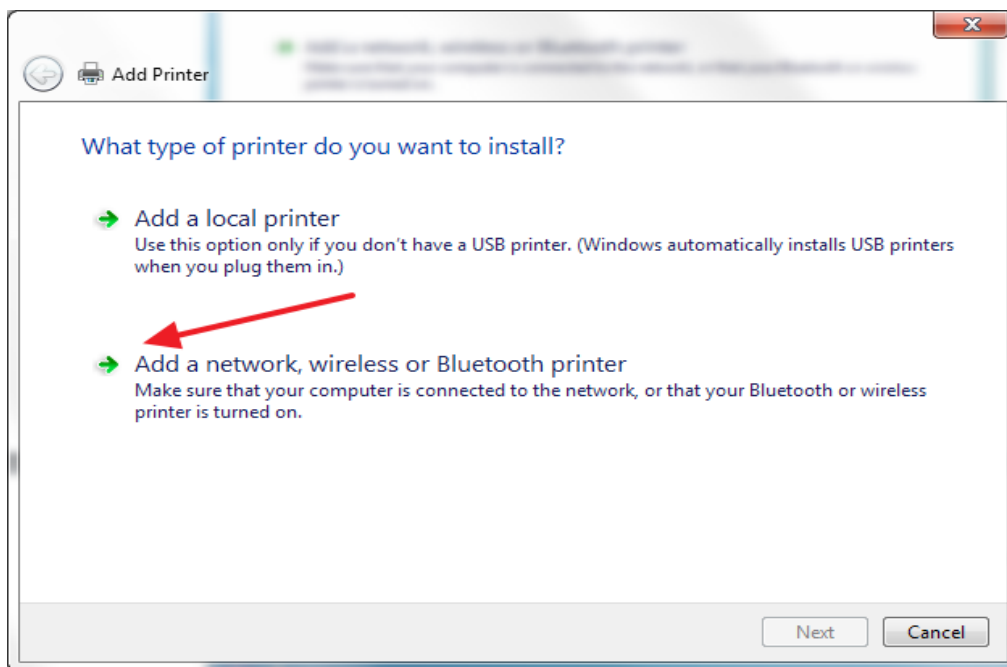
6. Click on Devices and Printers in the right hand grey column of the start window.



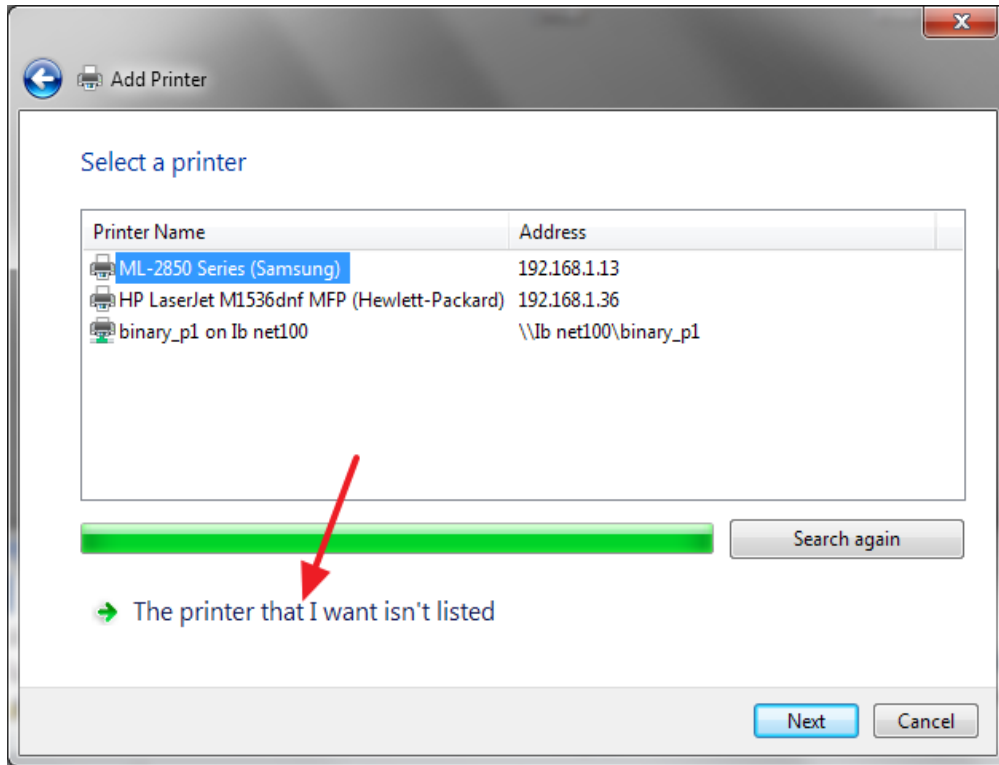
7. Click on the “Add a printer” link in the top tool bar to open the “Add Printer” window.



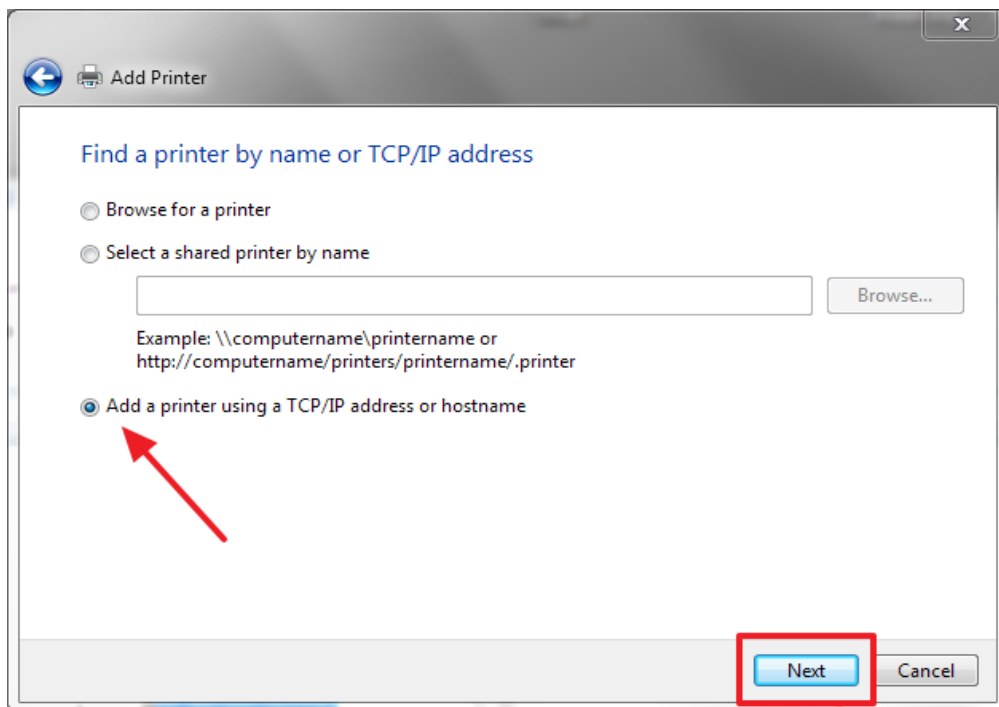
8. Click “Add a network, wireless or Bluetooth printer.”



9. A network search will take place. Wait for it to finish. If you do not see your printer listed, click on “The printer that I want isn’t listed” text.



10. Select “Add a printer using a TCP/IP address or hostname and click “Next”.



11. In the “hostname or IP address:” field, enter the IP address obtained earlier in step 4. Click “Next” to continue. **Note: Your IP address may be different than the one shown here.**

Type a printer hostname or IP address

Device type: Autodetect

Hostname or IP address: 192.168.1.9

Port name: 192.168.1.9

Query the printer and automatically select the driver to use

Next Cancel

12. Make sure the “Standard” button and the “Generic Network Card” is selected. Click “Next” to continue.

Additional port information required

The detected device is of unknown type. Be sure that:

1. The device is properly configured.
2. The address on the previous page is correct.

Either correct the address and perform another search on the network by returning to the previous wizard page or select the device type if you are sure the address is correct.

Device Type

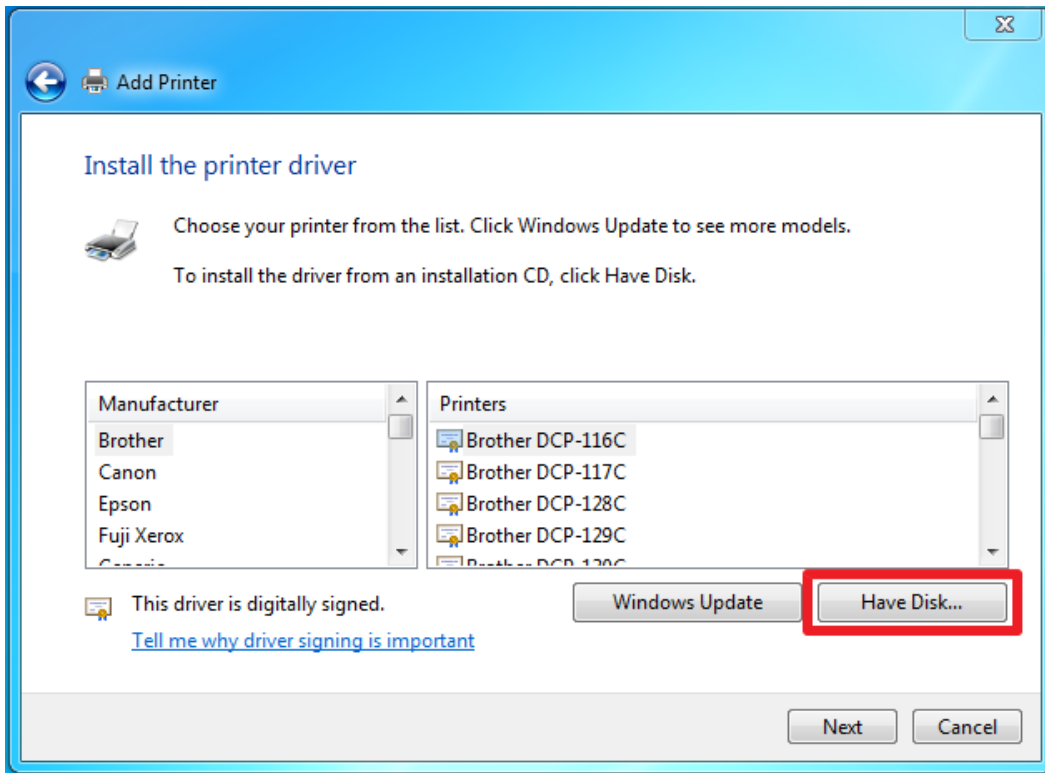
Standard Custom

Generic Network Card

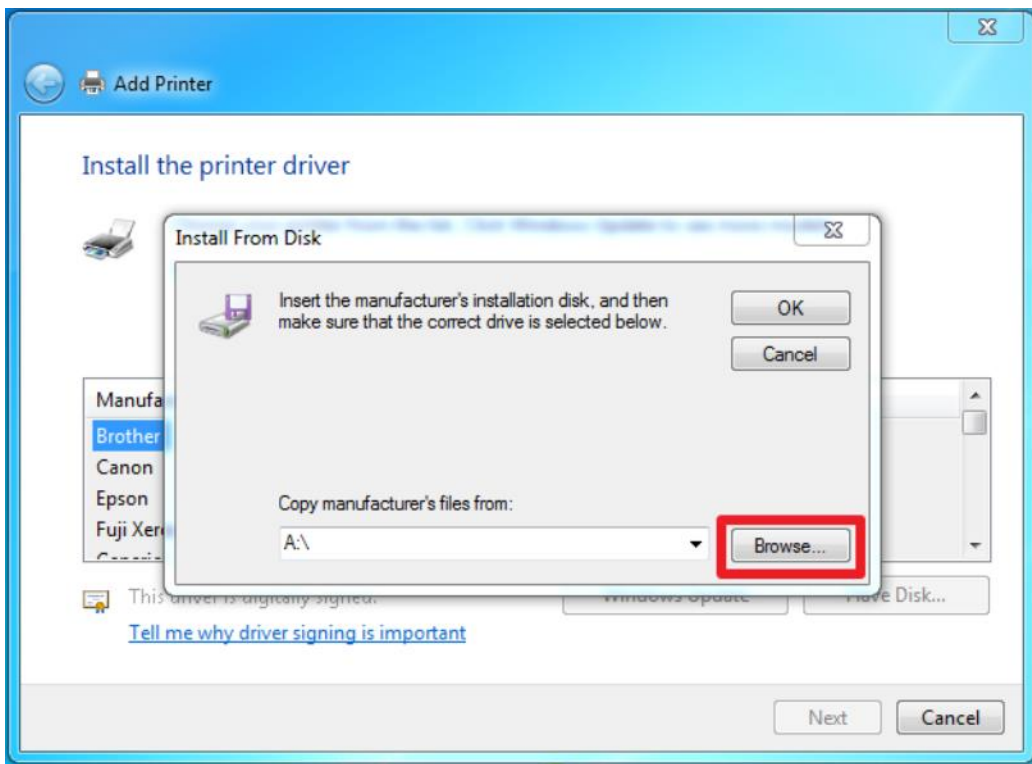
Settings...

Next Cancel

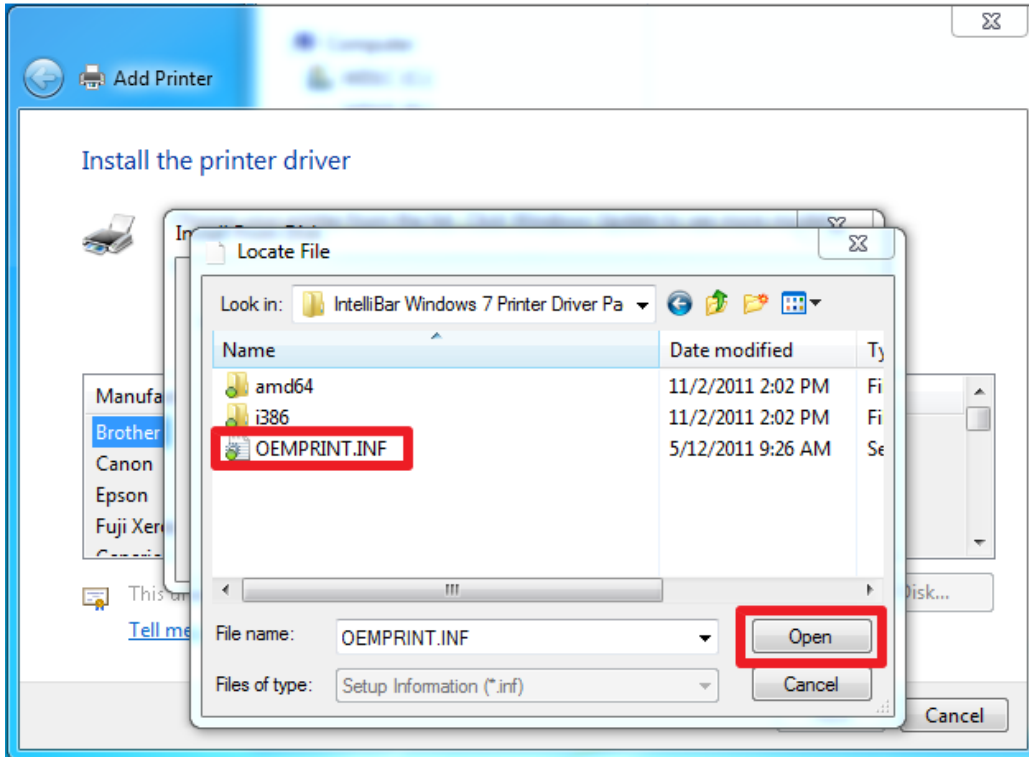
13. Click the “Have Disk...” button.



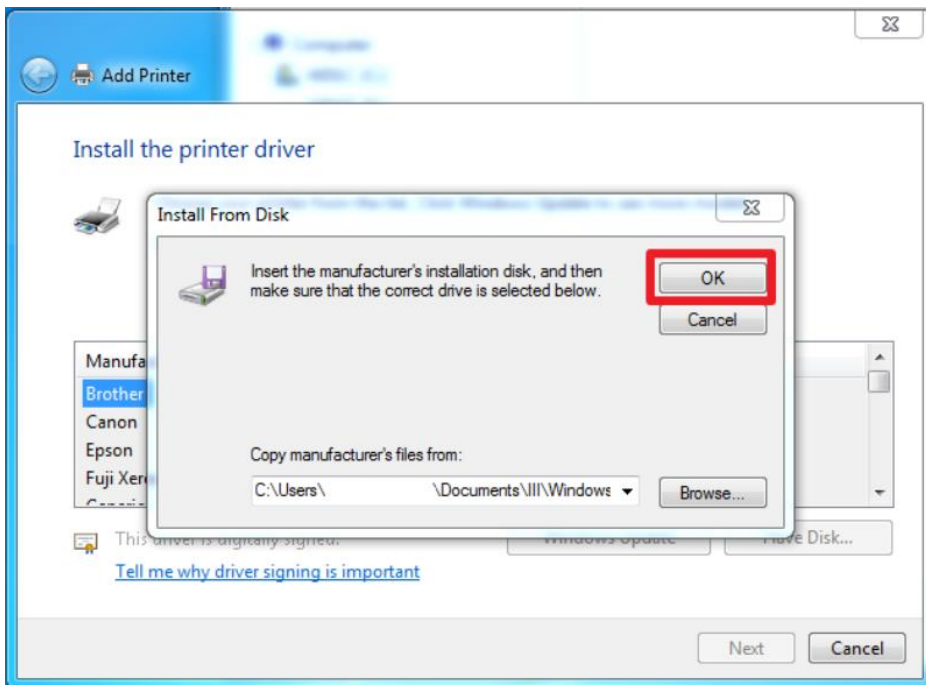
14. The “Install From Disk” window will open. Click on the “Browse” button.



15. Navigate to the location where you downloaded and unzipped the IntelliBar Windows 7 Driver Package (from step 2) and click on the OEMPRINT.INF file to select it. Click the “Open” button.



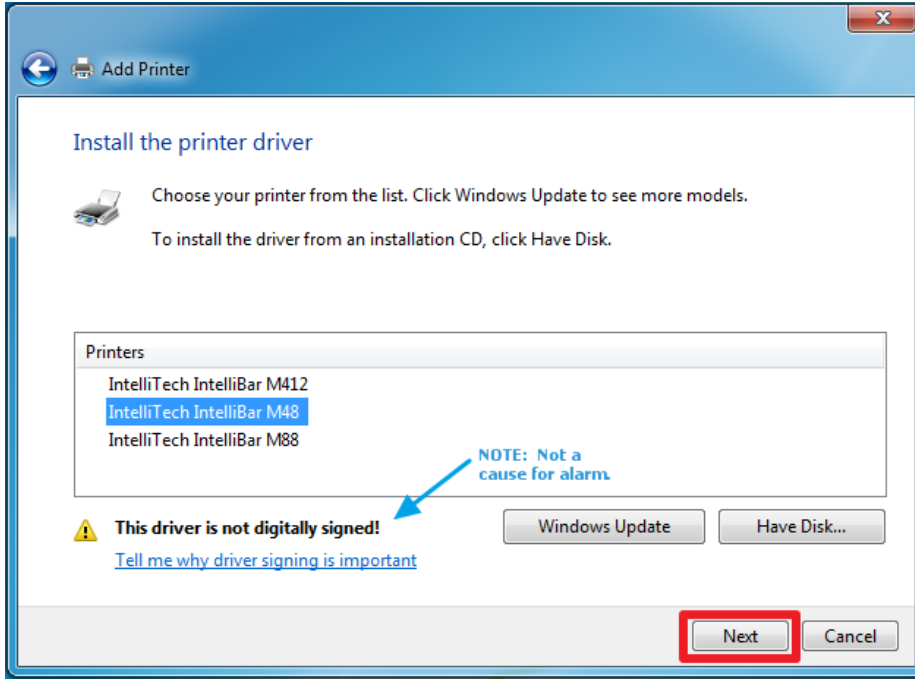
16. The “Install From Disk” window will reopen. Click on the “OK” button.



17. The “Install the printer driver” window will appear. Click on your IntelliBar model to select it and then click on the “Next” button.

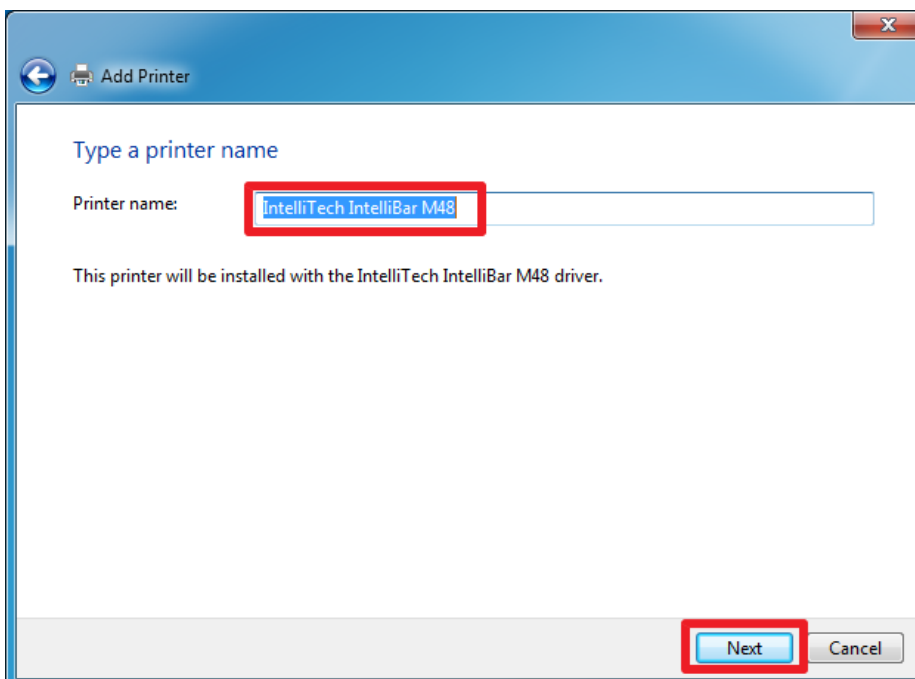
NOTE: The IntelliBar driver installation package senses whether your Windows 7 operating system is 32 bit or 64 bit and automatically presents the appropriate drivers for you to select.

NOTE: Windows may present a warning: **This driver is not digitally signed!** This is not cause for alarm.

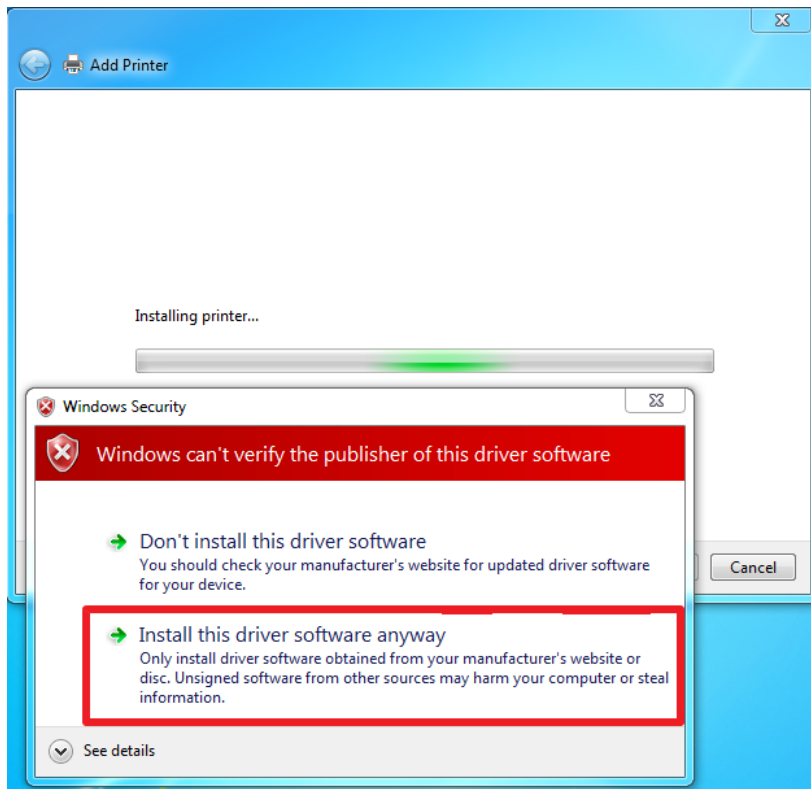


Note: If a dialog box pops up asking which driver to use, choose “Replace current driver” if you are upgrading to a newer driver.

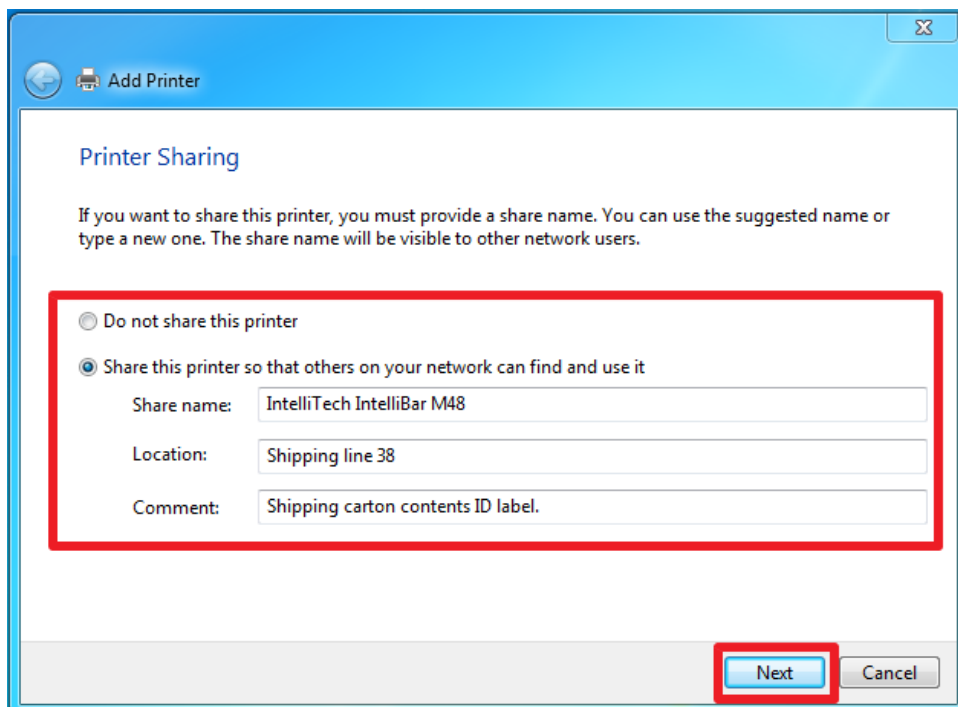
18. The “Type a printer name” window will open. Type your choice of a name for your IntelliBar printer in the “Printer name:” box and click the “Next” button.



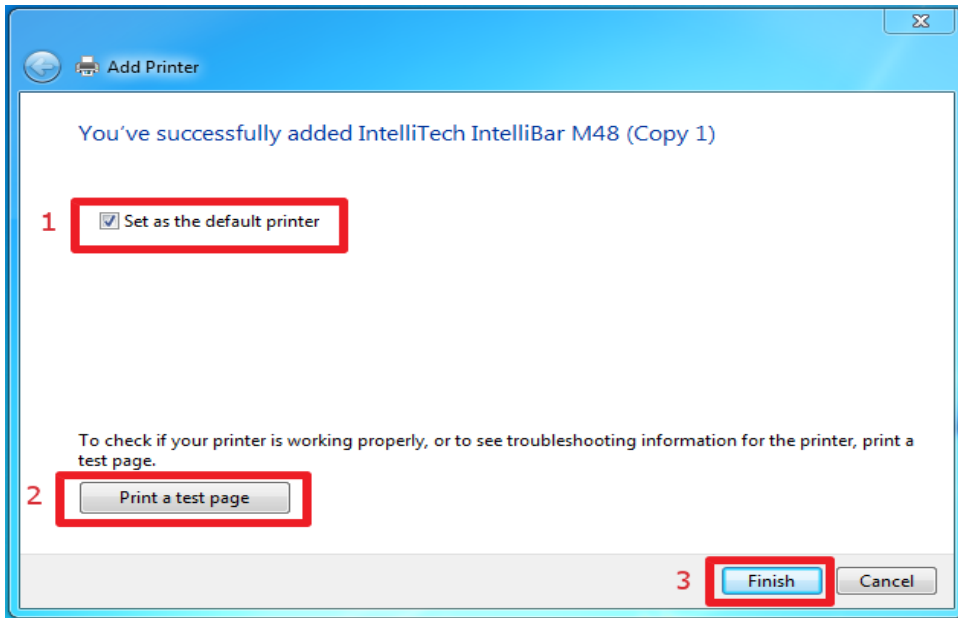
19. Windows may present a Windows Security Warning box, warning that Windows can't verify the publisher of this driver software. The IntelliBar Windows 7 driver will not harm your computer system. Click on the "Install this driver software anyway" selection to continue.



20. The IntelliBar driver will be installed and the Printer Sharing window will open. Choose whether or not to share the IntelliBar printer. If you choose to share, you may edit the Share name, indicate its location or add a comment. After making your selection and entries, click the "Next" button.



21. Windows will notify you that the IntelliBar printer has been successfully added to your system. You may set the IntelliBar as your default printer by clicking on the “Set as the default printer” box, or leave it unselected as you wish. Click on the “Print a test page” button. Your IntelliBar printer will print out the test page, or the portion of which will fit on the label you have installed in the printer. Click the “Finish” button to complete the installation.



Your IntelliBar printer is now ready for use with your Windows 7 operating system.

2-18-15

*** END OF DOCUMENT ***