

Installing IntelliBar Mi Series Printers via a USB Connection On Macintosh Computers

Note: 1. The following procedure was performed on
Mac OS X Versions 10.7 and 10.8.

2. The printer software is included in the Mac OS, nothing to download.

1. Physically install your IntelliBar printer on your Mac computer's local USB port. The printer should have ribbon and labels installed, be powered on and be in the "Ready" state.

2. From the Mac Desktop, click on the "Launchpad" icon.



3. In the Launchpad screen, click on the "System Preferences" icon.



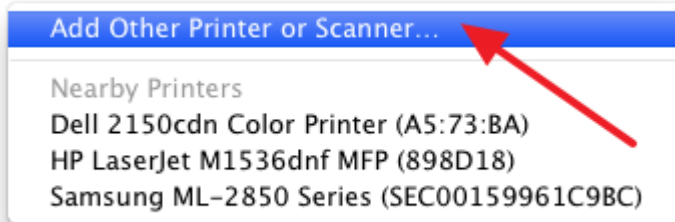
4. In the System Preferences window, click on "Print & Scan".



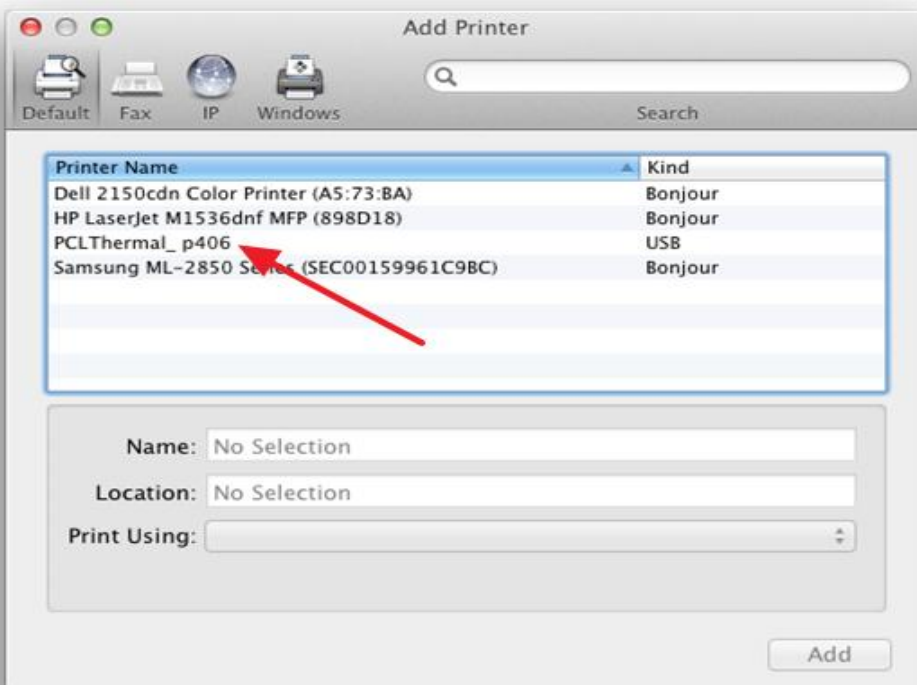
5. In the Print & Scan window, click on the "+" sign. (Your window may list none or different printers than shown here.)



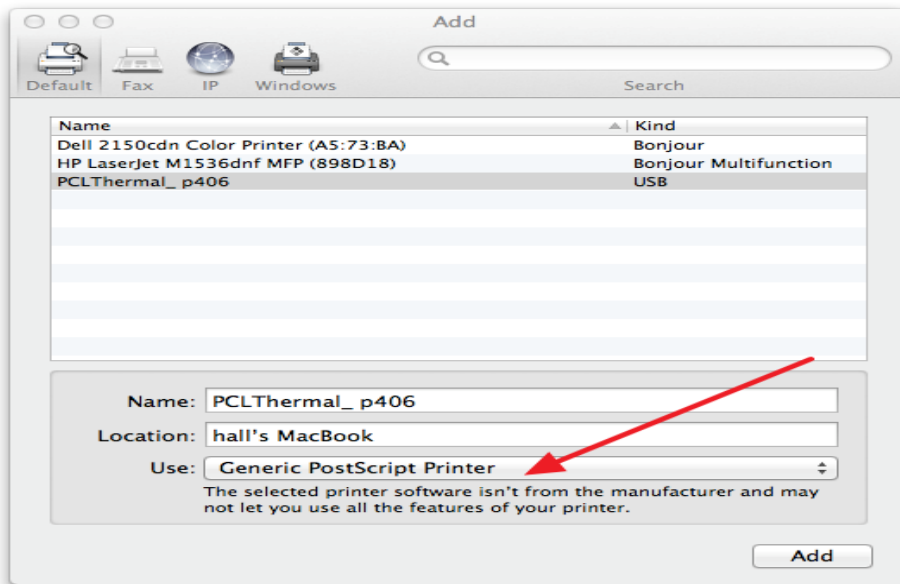
6. A small window will open. Click on: "Add Other Printer or Scanner...". (Again, your window may list none or different printers than shown here.)



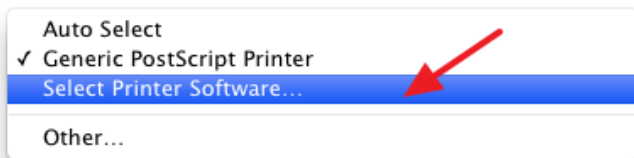
7. In the Add Printer window, click "PCLThermal_p406". When you do this, your printer may output a page.



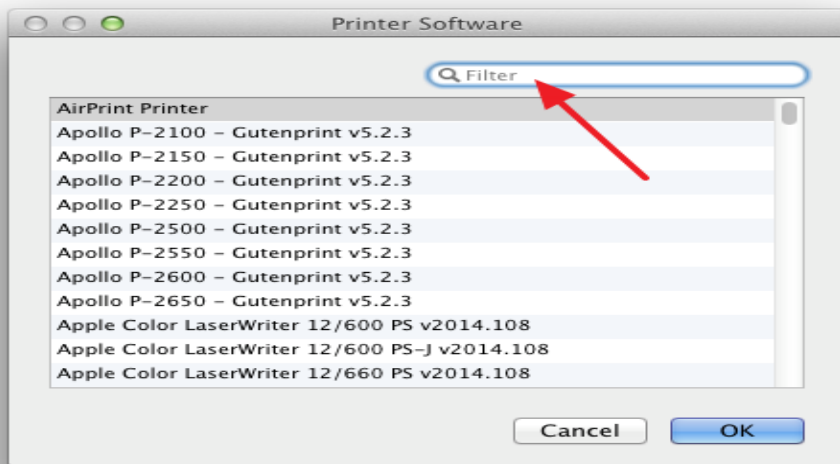
Now click on the “Use” drop down menu (where it may say “Generic PostScript Printer”).



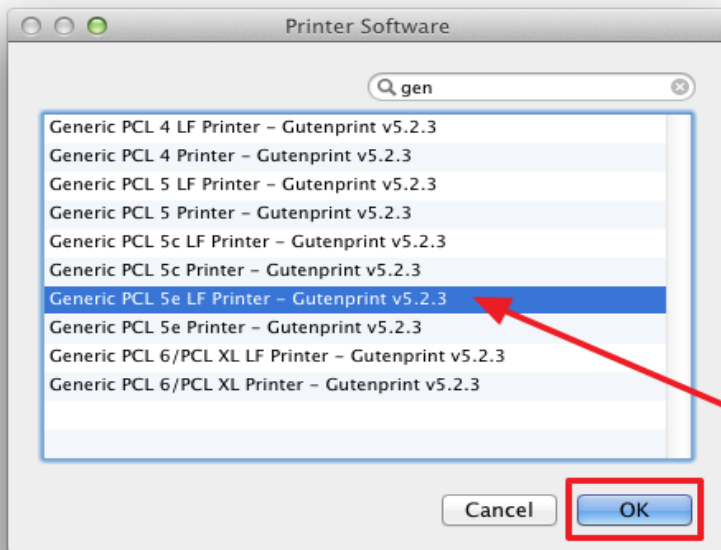
And choose “Select Printer Software...”.



8. The Printer Software window will open. Type “gen” in the Filter box. This will find all the Generic drivers.



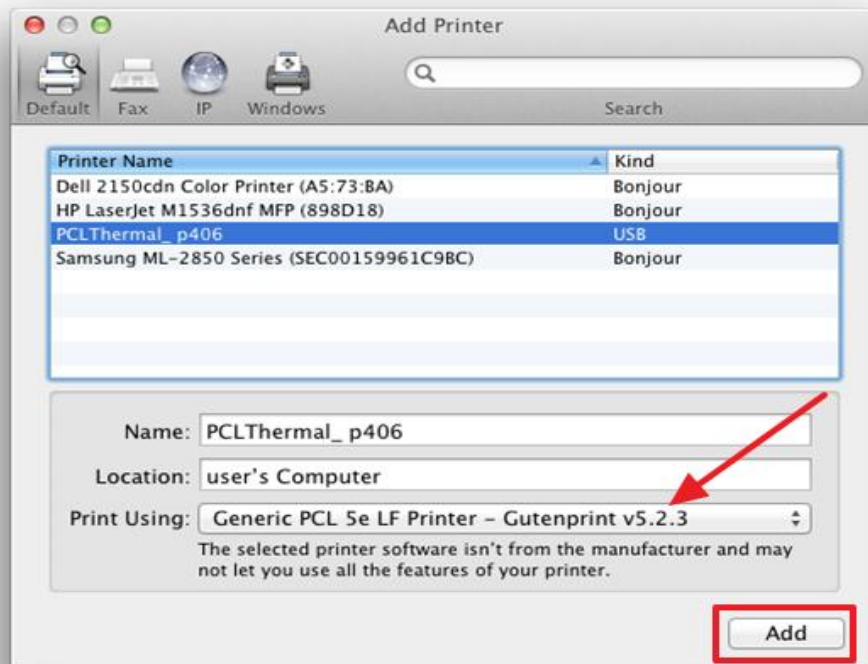
Select the “Generic PCL 5e LF Printer – Gutenprint” driver and click OK.



9. Make sure the selected driver is shown in the “Print Using:” window .

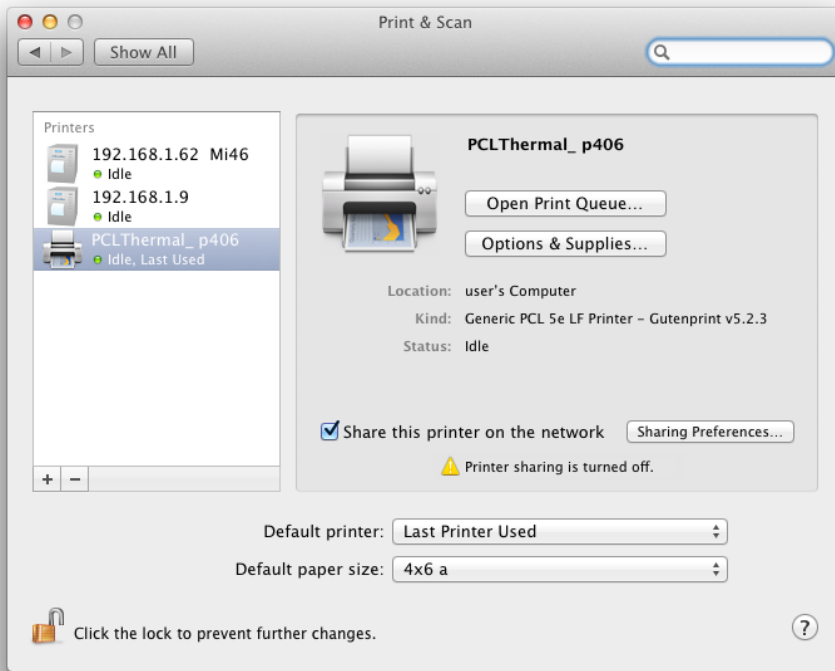
Note: At this time you may change the Name and Location fields to suit your needs.

Click on “Add”.



10. A window quickly pops up, indicating that the driver is being installed, and then disappears.

11. Your IntelliBar Mi Series printer is now installed and ready for use with your Mac computer.



Intellitech International Inc.
43 Broad Street
Hudson, MA 01749
(978) 212-7200

2/28/13

*** END OF DOCUMENT ***